

NORDIC MARINE RUNNER

INSTRUCTIONS:

Equipment needed: Tape measure, knife, hammer, drill with square bit.

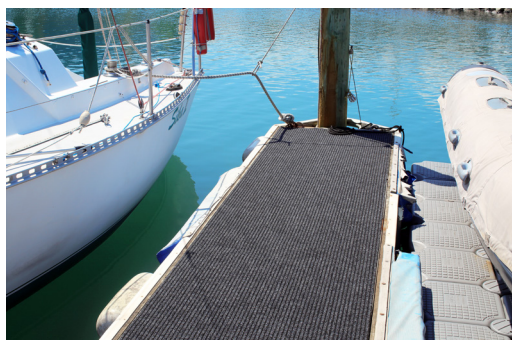
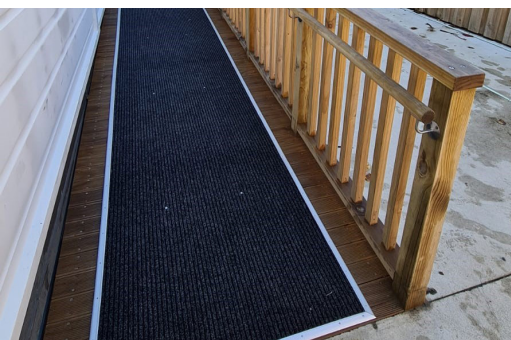
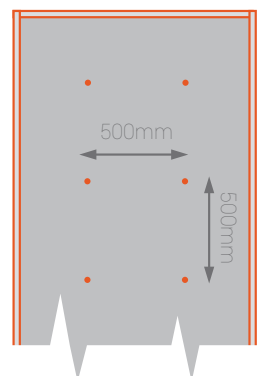
1. Measure area required for the matting.
2. Prepare the area; start with a clean surface to remove grit and other debris where the matting will go.
3. Lay out the matting in it's desired loction. *For best results it is recommended that the matting is rolled out and acclimatised for a few hours.*
4. Screw into place using stainless steel AKO Screws & Cup Washers down the middle of the mat – every 500mm (see reference 1, right). *Note: You need to ensure the mat is stretched out flat when screwing it down so that no bubbles or bumps are created in the matting that will cause any safety or trip hazards.*
5. Place the aluminium AKO Edge Bars on the edge of the matting – half on the matting, half on the decking. Secure the edge bars down with the nails provided. Again, stretch the matting out so there is no bubbles in it. *Note: We do not recommend to use an adhesive to fix the matting down, as it has a gel foam backing, so will be lot harder to remove the matting after use leaving foam stuck to the decking.*
6. Nordic Marine Runner only comes in 25m rolls, if you require matting to cover an area longer than 25m, use AKO Edge Bars to join the two edges together to prevent any trip hazards (see image reference 2, below). Continue with steps 3-6 untill area is completed! See below some images of completed Nordic Marine Runner installations for your reference.

S/S Screw & Washer



AKO Edge Bar

Reference 1.



Reference 2.