

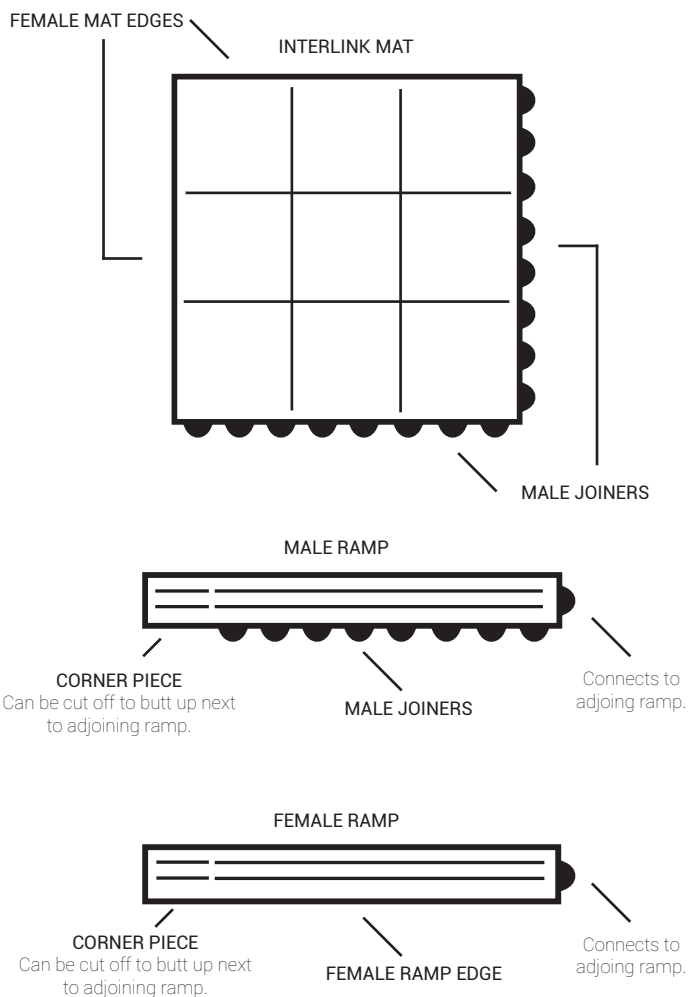
INTERLINK MAT

INSTRUCTIONS:

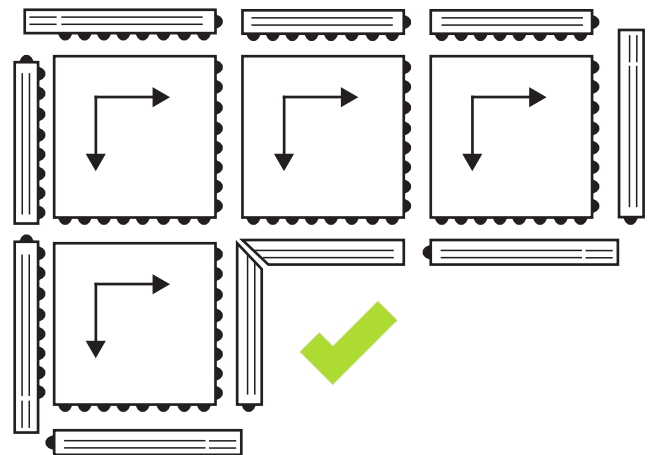
1. Prepare the area; start with a clean surface to remove grit and other debris that might affect the tiles.
2. Orientate the tiles to your ideal layout, see picture below for the different components to the Interlink Mat and the ramps to help you connect your tiles together correctly:



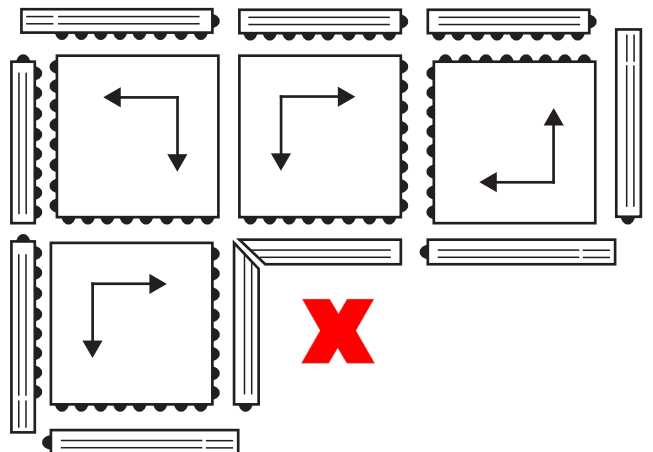
INTERLINK COMPONENTS:



CORRECT LAYOUT EXAMPLE:

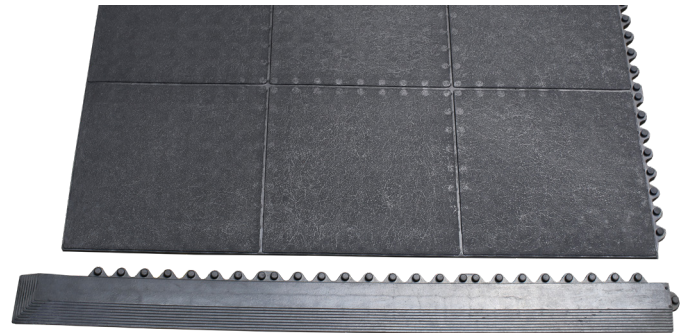


INCORRECT LAYOUT EXAMPLE:

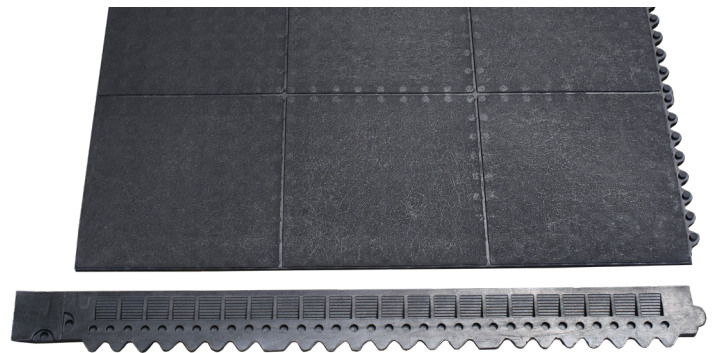


INTERLINK MAT CONT.

3. To add the ramps to the surrounding edge of your interlocking mat layout, they will need to be connected so that the joiners on the ramps correspond with the correct joiner on the mat. The male joiners fit female joiners and vice versa. Please see the picture (right) which shows a male ramp joining to the female side of the tile.



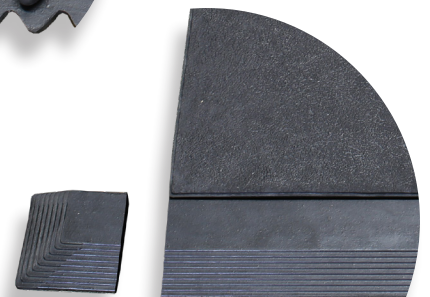
4. Every ramp edge we supply comes with a corner piece in case you need it. However, these are often needed to be removed so that it can butt up to the next ramp. Work out which ones need the corner piece removed and which ones still need the corner piece to complete the layout. To remove the corner piece, turn the ramp over to show the reverse side:



5. The cut line on the right-hand side indicates where the ramp corner piece should be cut. Use a sharp knife and a straight edge to cut this safely.

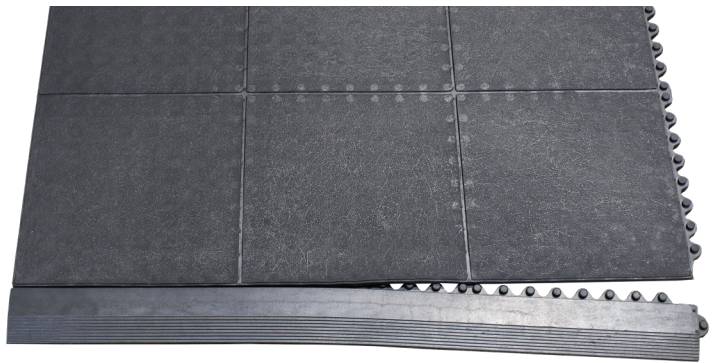


6. The cut ramp should look like the image (right), with a clean cut allowing it to butt to the end of the next ramp.

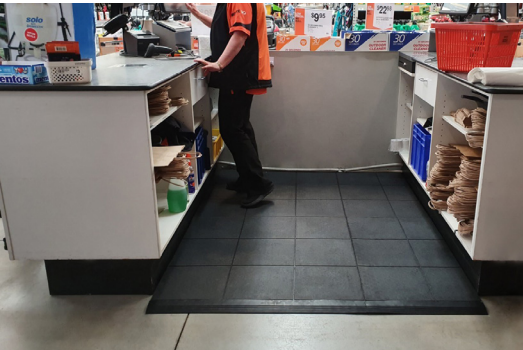


INTERLINK MAT CONT.

- 7.** Clip on the ramp to the tile as shown (right):



- 8.** Keep repeating this process until you have completed your interlocking mat layout. See below pictures of completed Interlink applications.



* Please Note: Tiles can be cut to fit in a custom shaped area - this step is obviously a bit more advanced and will need to be carefully measured to ensure it fits perfectly into your location. Use a sharp knife and a straight edge to cut this safely.