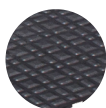


MULTIPRO GYM TILES

COLOURS/ DESIGNS



Closed -
Solid Top

APPLICATIONS

- Ideal for gym areas, playgrounds, noise reducing, factories

FEATURES

- Approx. 24mm thick
- Excellent ergonomic and anti-fatigue qualities
- Modular design, interlocking to cover large areas
- Ramps available to eliminate tripping hazards
- Made from recycled material
- UV protected
- Indoor/outdoor use



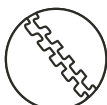
Slip Resistance



Anti Fatigue



Enviro Friendly



Modular



Outdoor Use



Indoor Use



THICK



6 YEARS
GUARANTEE

*Guaranteed against failure from manufacturing defects

| PROPERTIES | MEASURED CHARACTERISTICS | VALUE | STANDARD |
|----------------------------|--------------------------|-----------------------------|-------------|
| MATERIAL | | | |
| | Polymer | PVC | |
| | Colour | Black | |
| | Standard Sizes (mm) | 500 x 500 | |
| | Thickness (mm) | 24 | |
| | Surface Finish | Textured solid top (Closed) | |
| | Backing Finish | Cleated | |
| MECHANICAL | | | |
| | Hardness | - | |
| | ADA Compliance | Yes | |
| | Co-Efficient of Friction | - | |
| | Fire Exposure | Passed | |
| | UV Stabilised | Yes | |
| TEMPERATURE | | | |
| | Temperature Range | -30°C to +60°C | |
| CHEMICAL RESISTANCE | | | |
| | Petrol & Oil | ● | |
| | Ozone & Weather | ● | |
| | Flame Resistance | ● | |
| | Animal & Vegetable Oil | ● | |
| | Wear Resistance | ● | |
| | Acid Resistance | ● | |
| | Alkali Resistance | ● | |
| KEY: | ● POOR | ● FAIR | ● EXCELLENT |